



# MARCH PUMPS

1819 PICKWICK AVE., GLENVIEW, IL 60026-1306, U.S.A  
 PHONE: (847) 729-5300 - FAX: (847) 729-7062  
 WWW.MARCHPUMP.COM

## DESCRIPTION:

Series 2 are centrifugal magnetic drive pumps, eliminating the need for a shaft seal. Pumps can be serviced with a screwdriver. The "LC" model is hermetically encapsulated allowing the pump to run fully submerged or in open air for complete moisture protection. Model 2CP-MD must be run submerged only. See the parts list for a breakdown of parts. BC models have an encapsulated impeller magnet.

## OPERATION:

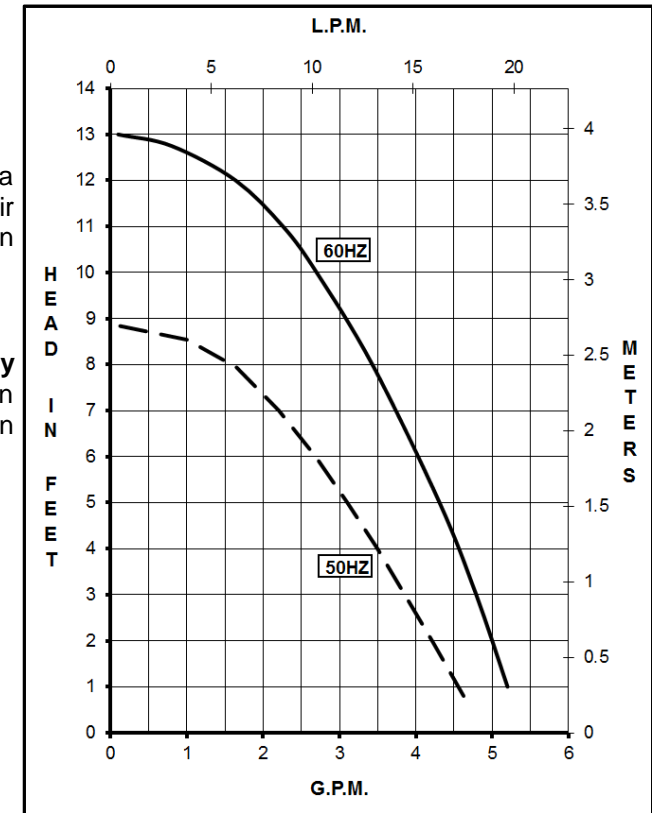
Pumps are not self-priming, lack a suction lift, and thus require a **flooded suction**. Pumps **cannot be run dry** because the impeller requires the liquid being pumped for lubrication. For liquids with a specific gravity greater than water, have a higher viscosity, or for elevated temperatures, a trimmed impeller may be necessary. For application assistance, contact March Pump.

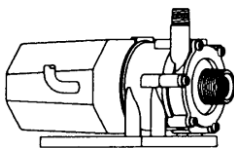
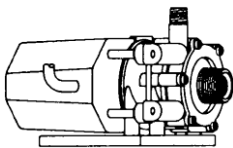
## ELECTRICAL:

Pumps are U.L. Recognized under File No. E80954. U.L. Recognition On Pumps Is For Water Only. Model 2CP-MD 115 V has a 6 ft (1.8 m) cord with plug, 230 V has a 6 ft (1.8 m) cord. Models LC-2CP-MD 115 V & 230 V have a 6 ft (1.8 m) cord.

**Model Abbreviations:** CP: Threaded Ports, LC: Liquid Cooled

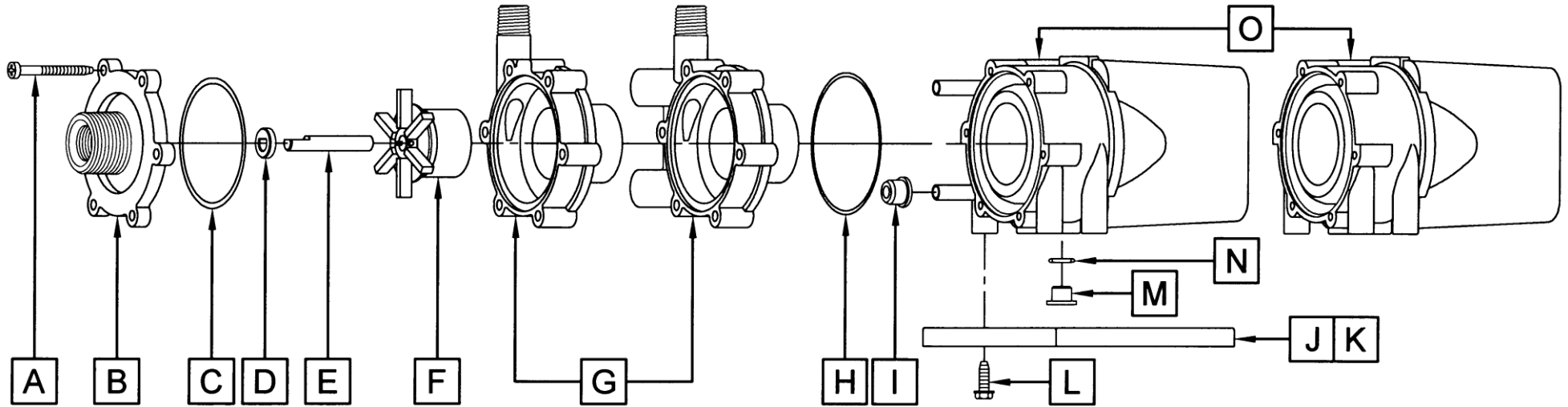
## 2CP-MD, LC-2CP-MD



SPECIFICATIONS		2CP-MD														LC-2CP-MD														
																														
Product #	115 V 230 V	0125-0058-0100 0125-0058-0200														0125-0057-0200 0125-0057-0300														
Inlet - Outlet		3/8" FPT & 3/4" MPT - 1/4" MPT														3/8" FPT & 3/4" MPT - 1/4" MPT														
Max Internal Pressure		50 psi (344 kPa)														25 psi (172 kPa)														
Max Liquid Temperature		130 °F (54 °C)														130 °F (54 °C)														
MODEL	Max Flow		Max Head			60 Hz						50 Hz						Height		Width		Length		Packed Weight						
	gpm	lpm	ft	psi	m	Ph	V	A	Hp	kW	Rpm	gpm	lpm	ft	psi	m	Ph	V	A	Hp	kW	Rpm	Inches	cm	Inches	cm	Inches	cm	lbs	kg
2CP-MD	5.0	18.9	13	5.7	4	1	115	0.92	1/50	0.015	3450	4.89	18.5	8.8	3.8	2.7	1	115	1.1	1/55	0.014	2850	4.13	10.4	4.87	12.3	6.11	15.5	5.05	2.29
							230	0.53	1/40	0.019								230	0.72										5.05	2.29
LC-2CP-MD	5.0	18.9	13	5.7	4	1	115	0.92	1/50	0.015	3450	4.89	18.5	8.8	3.8	2.7	1	115	1.1	1/55	0.014	2850	4.13	10.4	4.87	12.3	6.11	15.5	5.10	2.31
							230	0.53	1/40	0.019								230	0.72										5.20	2.35

All specifications & data are based on pumping water & are intended as a guideline only. Specifications may vary with different motors.

**PARTS LIST**



**NOTE:** When attaching the Drive Magnet to the motor shaft, position the face of the Drive Magnet 1/16 inch below the face of the Motor Bracket.

#	2CP-MD	LC-2CP-MD	MATERIAL	SIZE (Inches)	QTY.	2CP-MD	LC-2CP-MD
A	Self-Tapping Screw		Stainless	#7-19 x 1-7/16 Lg.	6	0115-0062-1000	
B	Cover		Polypropylene	3/8 FPT x 3/4 MPT	1	0125-0056-1000	
C	"O" Ring		Viton	3/32 CS x 2-3/16 OD	1	0125-0065-1000	
D	Thrust Washer		Ceramic		1	0130-0028-1000	
E	Shaft		Stainless		1	0125-0125-1000	
F	Impeller with Ceramic Magnet		Polypropylene		1	0125-0055-0100	
G	Rear Housing	Rear Housing & Plug	Polypropylene	1/4 MPT	1	0125-0058-1000	0125-0057-0100
H	Bracket "O" Ring		Viton	1/16 CS x 2-3/8 OD	1	0125-0121-1000	
I	Cooling Tube Seal		Buna N		2	0125-0007-1000	
J	Mounting Base		Polypropylene		1	0125-0060-1000	
K	Marine Base (Not Shown) (Option)		Polypropylene & Grommets		1	0125-0113-0100	
L	Base Screw		Stainless		4	0125-0130-1000	
M	Plug (Motor Bracket)				1	0125-0110-1000	
N	"O" Ring		Viton	1/16 CS x 7/16 OD	1	0210-0008-1000	
O	Epoxy Motor Assembly	L.C. Epoxy Motor Assembly			n/a	Not Available	
W	Wet End Kit (A, B, C, D, E, F, G, H, I)					0125-0115-0200	

**MATERIALS IN CONTACT WITH SOLUTION:**

Polypropylene, Ceramic, Viton, Stainless Steel, Ceramic Magnet

**When submerged also:**

Epoxy, Buna N, cord.

**LIMITED WARRANTY:**

March pumps are guaranteed only against defects in workmanship or materials for a period of one year from date of manufacture pumping water. For the complete warranty and to register online go to [www.marchpump.com/warranty-registration](http://www.marchpump.com/warranty-registration)

NOTE: Contact Factory for other materials and/or parts not listed.

0125-0074-1000 R21