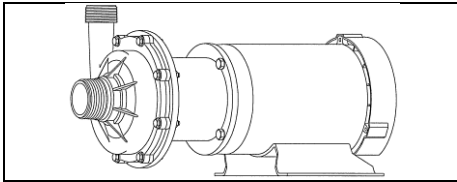




# MARCH PUMPS

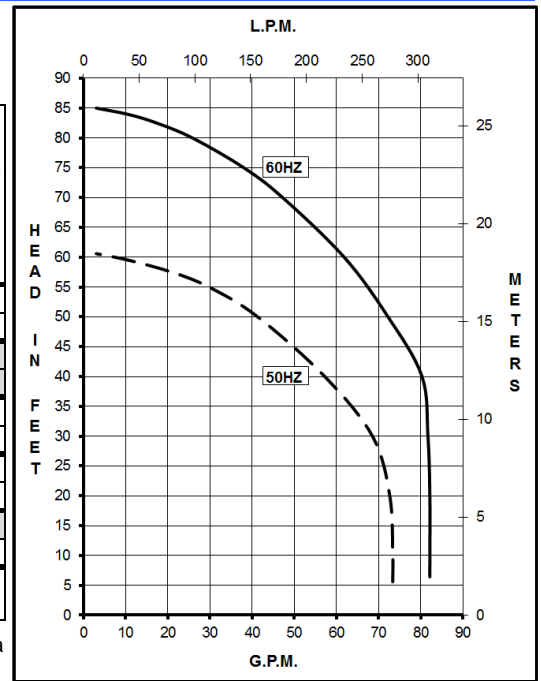
1819 PICKWICK AVE., GLENVIEW, IL 60026-1306, U.S.A  
 PHONE: (847) 729-5300 - FAX: (847) 729-7062  
 WWW.MARCHPUMP.COM

## TE-7.5K-MD, TE-7.5P-MD Intermittent Duty



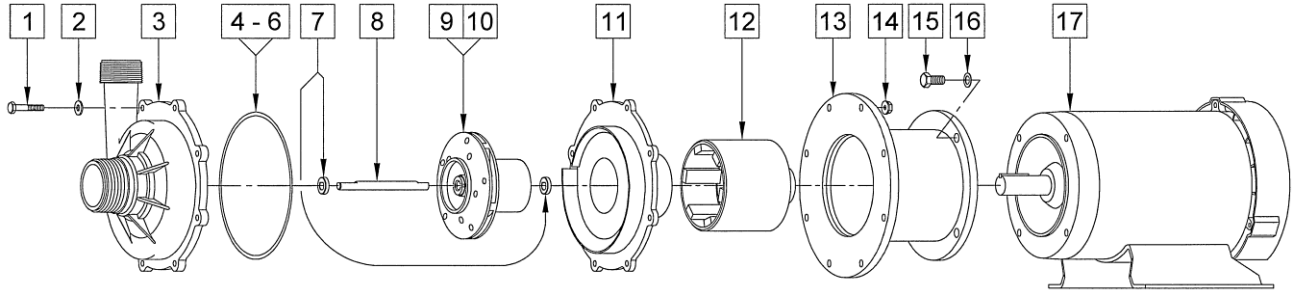
All specifications & data are based on pumping water & are intended as a guideline only. Specifications may vary with different motors.

Product #	TE-7.5K-MD (Kynar)						TE-7.5P-MD (Polypropylene)							
	0156-0001-0700						0156-0059-0500							
Hz	Max Flow		Max Head		ELECTRICAL						Overall Size			
	gpm	lpm	ft	psi	m	Ph	V	A	Hp	kW	Rpm	Height	Width	Length
60	82	310	85	36.8	26	3	230	5.4	2	1.491	3450	10"	9.53"	19.58"
							460	2.7				25.4 cm	24.2 cm	49.7 cm
50	70.8	268	59	25.6	18	3	190	4.8	1.5	1.118	2850	10"	9.53"	19.58"
							380	2.4				25.4 cm	24.2 cm	49.7 cm
Inlet - Outlet			Max Internal Pressure			Max Liquid Temperature			Packed Weight					
2" MPT - 1-1/2" MPT			60 psi / 413 kPa			190 °F / 87 °C			54.80 lbs / 24.85 kg					
Materials in Contact		TE-7.5K-MD: Natural Kynar (PVDF), Ceramic, Viton, Carbon.												
With Solution		TE-7.5P-MD: Polypropylene, Ceramic, Viton, Carbon.												



**ELECTRICAL:** The U.L. listed motor is totally enclosed fan cooled for intermittent duty with a conduit box.

**DESCRIPTION & OPERATION:** Series 7.5 are centrifugal magnetic drive pumps, eliminating the need for a shaft seal. Pumps can be serviced with an adjustable wrench. See the parts list for a breakdown of parts. Pumps are not self-priming, lack a suction lift, and thus require a **flooded suction**. Pumps **cannot be run dry** because the impeller requires the liquid being pumped for lubrication. The direction of motor rotation should be clockwise when facing the inlet of the pump. For liquids with a specific gravity greater than water, have a higher viscosity, or for elevated temperatures, a trimmed impeller may be necessary. For application assistance, contact March Pump.



**CAUTION IN ASSEMBLY & DISASSEMBLY:** The magnetic coupling in the pump is strong enough to warrant caution. When servicing the pump, the attraction of the impeller magnet and drive magnet may pull the impeller from your grasp. When assembling, hold onto the outer diameter of the impeller vanes with both hands and gently engage the impeller into the magnet field. Hold the impeller firmly and resist the magnetic attraction as you slowly put the impeller back in. The magnetic forces are strongest between 1/3 to 2/3 of engagement and will diminish when the magnets become aligned. Do not allow the impeller to snap into the rear housing, doing so may result in damage. Exercise caution in placing any of the magnets near steel, tools, or other sensitive instruments as doing so may result in damage or personal injury. When attaching drive magnet to motor shaft, position the face of the drive magnet 5/32 inch above the face of the motor bracket.

**LIMITED WARRANTY:** March pumps are guaranteed only against defects in workmanship or materials for a period of one year from date of manufacture pumping water. For the complete warranty and to register online go to [www.marchpump.com/warranty-registration](http://www.marchpump.com/warranty-registration)

#	DESCRIPTION	TE-7.5K-MD	TE-7.5P-MD	SIZE (Inches)	QTY.	TE-7.5K-MD	TE-7.5P-MD
1	Screw	Stainless Steel		1/4-20 x 1-1/2 Lg.	8	0153-0011-1000	
2	Washer	Stainless Steel		1/4 ID x 5/8 OD	8	0157-0023-1000	
3	Front Housing	Natural Kynar	Polypropylene		1	0156-0001-1000	0156-0060-1000
4	"O" Ring	Viton		0.157 CS x 6.457 ID	1	0156-0010-1000	
5	"O" Ring (Option)	Viton/Teflon		0.157 CS x 6.457 ID	1	0156-0023-1000	
6	"O" Ring (Option)	EPDM		0.157 CS x 6.457 ID	1	0156-0034-1000	
7	Thrust Washer (Front & Rear)	Ceramic			2	0156-0016-1000	
8	Shaft	Ceramic		4.500 Lg.	1	0156-0007-1000	
9	Impeller w/Carbon Bushing	Natural Kynar	Polypropylene		1	0156-0004-0200	0156-0064-0200
10	Impeller w/Mica Teflon Bushings (Option)	Natural Kynar	Polypropylene		1	0156-0004-0300	0156-0064-0300
11	Rear Housing	Natural Kynar	Polypropylene		1	0156-0002-1000	0156-0061-1000
12	Drive Magnet				1	0156-0009-0100	
13	Motor Bracket	Aluminum			1	0156-0073-0010	
14	Hex Nut	Stainless Steel		1/4-20	8	0156-0053-1000	
15	Screw	Stainless Steel		3/8-16 x 1 Lg.	4	0155-0017-1000	
16	Washer	Stainless Steel		3/8 ID x 5/8 OD	4	0155-0019-1000	
17	Motor, TEFC, 2 HP, 230/460V, 50/60Hz, 3 Phase (Intermittent Duty)				1	0156-0072-1000	
W	Wet End Kit (Items: 1, 2, 3, 4, 7, 8, 9, 11)				1	0156-0031-0100	0156-0066-0100

Explosion proof and special voltage motors are available upon special order.

NOTE: Contact Factory for other materials and/or parts not listed.

0156-0015-1100 R1