



MARCH PUMPS

1819 PICKWICK AVE., GLENVIEW, IL 60026-1306, U.S.A
 PHONE: (847) 729-5300 - FAX: (847) 729-7062
 WWW.MARCHPUMP.COM

DESCRIPTION:

Series 2 are centrifugal magnetic drive pumps, eliminating the need for a shaft seal. Pumps can be serviced with a screwdriver. See the parts list for a breakdown of parts. BC models have an encapsulated impeller magnet.

OPERATION:

Pumps are not self-priming, lack a suction lift, and thus require a **flooded suction**. Pumps **cannot be run dry** because the impeller requires the liquid being pumped for lubrication. For liquids with a specific gravity greater than water, have a higher viscosity, or for elevated temperatures, a trimmed impeller may be necessary. For application assistance, contact March Pump.

ELECTRICAL:

The AC-2CP-MD & AC-2AP-MD open air cooled motors as well as BC-2CP-MD & BC-2AP-MD blast cooled motors are available in different electrical configurations such as, 115V 50/60Hz, or 230V 50/60Hz, 1 phase.

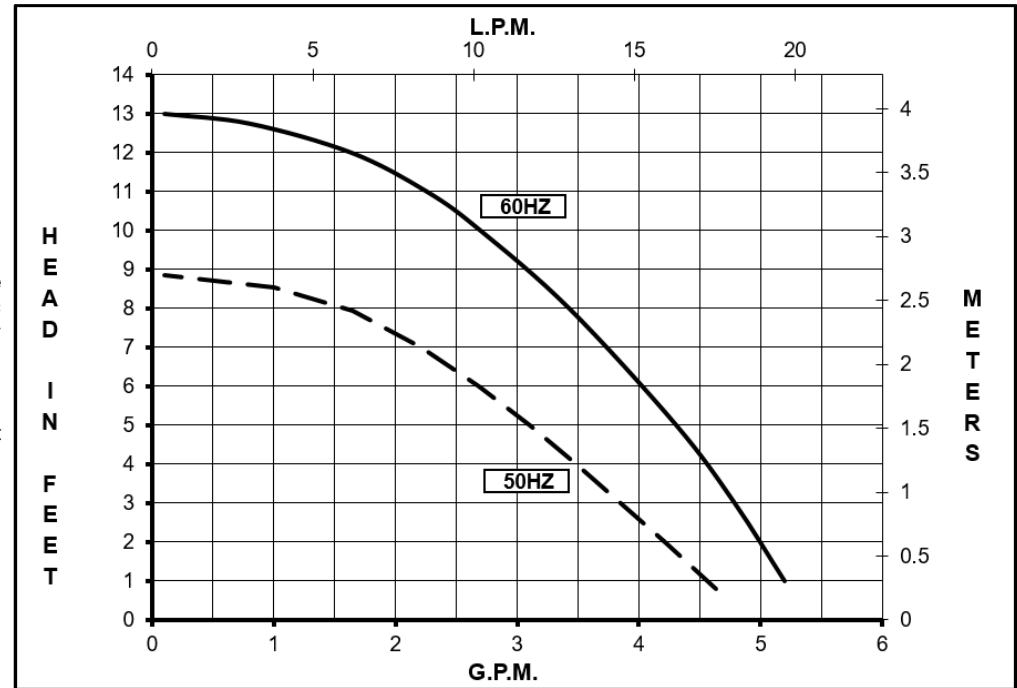
AC-2CP-MD & AC-2AP-MD have an air cooled motor with a 3 ft (0.9 m) cord.

BC-2CP-MD & BC-2AP-MD have a blast cooled motor with a 3 ft (0.9 m) cord.

All motors are U.L. listed and rated for continuous duty.

Model Abbreviations: CP: Threaded Ports, AP: Smooth Ports

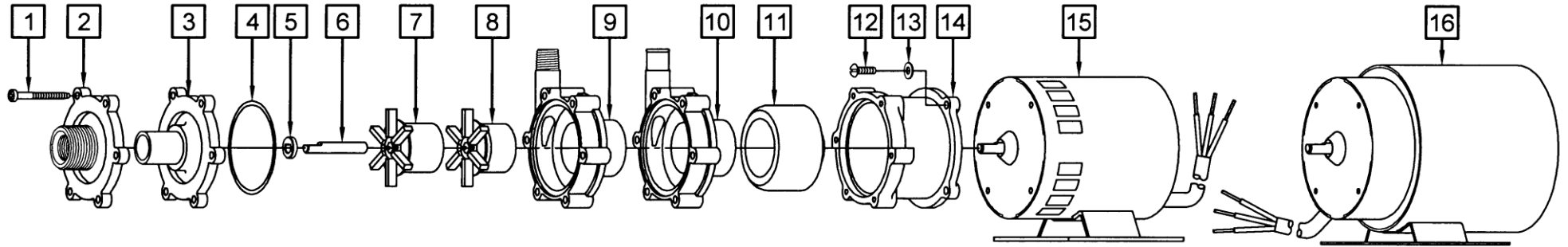
AC-2CP-MD, AC-2AP-MD, BC-2CP-MD, BC-2AP-MD



SPECIFICATIONS		AC-2CP-MD											AC-2AP-MD											BC-2CP-MD											BC-2AP-MD										
		115 V		230 V		3/8" FPT & 3/4" MPT - 1/4" MPT		50 psi (344 kPa)		190 °F (87 °C)		0125-0069-0100		0125-0069-0300		3/4" OD - 1/2" OD		50 psi (344 kPa)		190 °F (87 °C)		0125-0069-0400		0125-0069-0500		3/8" FPT & 3/4" MPT - 1/4" MPT		50 psi (344 kPa)		190 °F (87 °C)		0125-0088-0100		0125-0088-0200		3/4" OD - 1/2" OD		50 psi (344 kPa)		190 °F (87 °C)		0125-0088-0400		0125-0088-0500	
MODEL	60 Hz		60 Hz		ELECTRICAL								50 Hz		50 Hz		ELECTRICAL								Height		Width		Length		Packed Weight														
	gpm	lpm	ft	psi	m	Ph	V	A	Hp	kW	Rpm	gpm	lpm	ft	psi	m	Ph	V	A	Hp	kW	Rpm	Inches	cm	Inches	cm	Inches	cm	lbs	kg															
AC-2CP-MD	5.0	18.9	13	5.7	4	1	115	1.2	1/40	0.019	3450	4.89	18.5	8.8	3.8	2.7	1	115	1.2	0.6	1/40	0.019	2850	4.5	11.4	3.5	8.8	7.39	18.7	4.20	1.90	4.25	1.92												
AC-2AP-MD	5.0	18.9	13	5.7	4	1	115	1.2	1/40	0.019	3450	4.89	18.5	8.8	3.8	2.7	1	115	1.2	0.6	1/40	0.019	2850	4.5	11.4	3.5	8.8	7.77	19.7	4.20	1.90	4.25	1.92												
BC-2CP-MD	5.0	18.9	13	5.7	4	1	115	1.2	1/40	0.019	3450	4.89	18.5	8.8	3.8	2.7	1	115	1.2	0.5	1/40	0.019	2850	4.56	11.5	3.91	9.9	8.36	21.2	6.20	2.81	6.25	2.83												
BC-2AP-MD	5.0	18.9	13	5.7	4	1	115	1.2	1/40	0.019	3450	4.89	18.5	8.8	3.8	2.7	1	115	1.2	0.5	1/40	0.019	2850	4.56	11.5	3.91	9.9	8.73	22.1	6.20	2.81	6.25	2.83												

All specifications & data are based on pumping water & are intended as a guideline only. Specifications may vary with different motors.

PARTS LIST



NOTE: When attaching the Drive Magnet to the motor shaft, position the face of the Drive Magnet 1/16 inch below the face of the Motor Bracket.

#	DESCRIPTION	MATERIAL	SIZE (Inches)	QTY.	AC-2CP-MD	AC-2AP-MD	BC-2CP-MD	BC-2AP-MD
1	Self-Tapping Screw	Stainless	#7-19 x 1-7/16 Lg.	6	0115-0062-1000			
2	Cover	Polypropylene	3/8 FPT x 3/4 MPT	1	0125-0056-1000		0125-0056-1000	
3	Cover	Polypropylene	3/4 OD Smooth	1		0125-0096-1000		0125-0096-1000
4A	"O" Ring	Viton	3/32 CS x 2-3/16 OD	1	0125-0065-1000			
4B		Buna N (Option)	3/32 CS x 2-3/16 OD	1	0125-0066-1000			
5	Thrust Washer	Ceramic		1	0130-0028-1000			
6A	Shaft	Ceramic		1	0125-0061-1000			
6B		Stainless (Option)		1	0125-0125-1000			
7	Impeller Encapsulated	Polypropylene		1	0125-0087-0200			
8	Impeller Bare Magnet	Polypropylene/Ceramic		1	0125-0055-0100			
9	Rear Housing	Polypropylene	1/4 MPT	1	0125-0058-1000		0125-0058-1000	
10	Rear Housing	Polypropylene	1/2 OD Smooth	1		1008-0001-1000		1008-0001-1000
11	Drive Magnet		0.250 Bore	1	0125-0083-0100			
12	Screw	Stainless	#8-32 x 1/2 Lg.	4	0150-0015-1000			
13	Washer	Stainless	#8	4	0858-0004-1000			
14	Motor Bracket	Plastic		1	0125-0069-1000			
15	Motor, 115 V, 50/60 Hz, Air Cooled			1	0125-0052-1000			
	Motor, 230 V, 50/60 Hz, Air Cooled			1	0125-0063-1000			
16	Motor, 115 V, 50/60 Hz, Blast Cooled			1	0125-0088-1000			
	Motor, 230 V, 50/60 Hz, Blast Cooled			1	0125-0089-1000			
W	Wet End Kit (1, 2, 4A, 5, 6A, 7 or 8, 9)			1	0125-0108-0200		0125-0109-0200	

MATERIALS IN CONTACT WITH SOLUTION

AC-2CP-MD & AC-2AP-MD: Polypropylene, Ceramic, Viton, Ceramic Magnet

BC-2CP-MD & BC-2AP-MD: Polypropylene, Ceramic, Viton

LIMITED WARRANTY:

March pumps are guaranteed only against defects in workmanship or materials for a period of one year from date of manufacture pumping water. For the complete warranty and to register online go to www.marchpump.com/warranty-registration

NOTE: Contact Factory for other materials and/or parts not listed.

0125-0076-1000 R26