



MARCH PUMPS

1819 PICKWICK AVE., GLENVIEW, IL 60026-1306, U.S.A
 PHONE: (847) 729-5300 - FAX: (847) 729-7062
 WWW.MARCHPUMP.COM

809 12 & 24 VDC HOT WATER PUMPS

DESCRIPTION:

March 809 Series hot water booster centrifugal magnetic drive pumps are built to handle liquid transfer in heating and cooling operations. Contact the factory for application assistance.

INSTALLATION:

Pumps are not self-priming, lack a suction lift, and thus require a flooded suction. Pumps cannot be run dry. The 809 Series pumps should be installed with the pump housing arrow pointing in the direction of flow within the system. If the arrow indicating flow is not in the direction required, remove the housing screws holding the housing to the motor bracket and rotate the housing assembly as required. Replace the screws and tighten. The pump is composed of a wet end assembly which can be separated by unscrewing the housing screws. The pump will then separate into 2 parts. The liquid will be contained within the wet end assembly unless the screws on the rear housing are loosened.

GENERAL SAFETY INFORMATION:

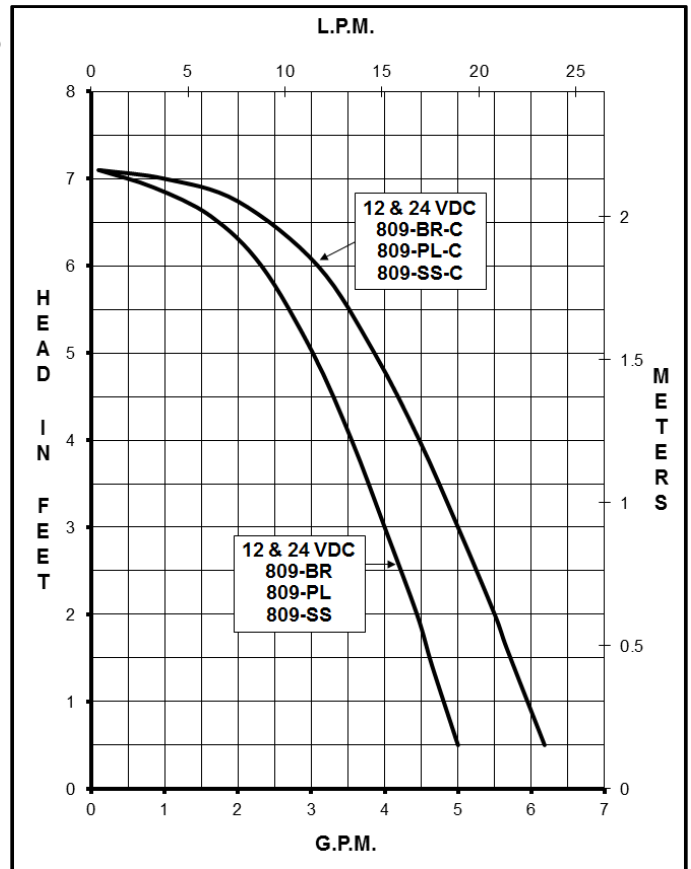
Follow all local electrical and safety codes, and the Occupational Safety and Health Act (OSHA). Make certain that the power source conforms to the requirements of your equipment. Always disconnect power source before performing any work on or near the electric motor. Caution must be exercised to relieve any pressure in the system and in draining hot water from the pump or the system. March cannot recommend the 809 Series out of bronze where the liquid is used for human consumption per California Law due to the presence of lead.

DISASSEMBLY & REASSEMBLY:

The motor can be removed from the wet end assembly without draining the liquid from the system. To do so remove four housing screws and slide the motor assembly away. If parts inside the wet end assembly must be removed, isolate the pump or drain the system. When the system is drained and cool, remove the four screws from the rear of the housing. The rear housing can now be removed. Remaining pump parts can be removed. Replace any worn or damaged parts. Replace the "O" ring anytime the rear housing is removed.

ELECTRICAL:

Motor type is brush DC in 12 Volt or 24 Volt. The red lead is positive & the black lead is negative.

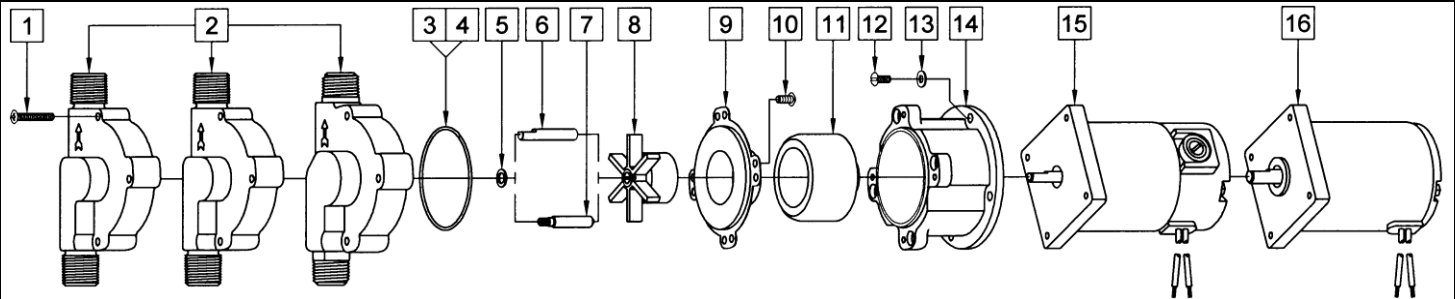


SPECIFICATIONS		809-BR				809-SS				809-PL				809-BR-C				809-SS-C				809-PL-C									
		W	A	Hp	kW	Rpm	W	A	Hp	kW	Rpm	W	A	Hp	kW	Rpm	W	A	Hp	kW	Rpm	W	A	Hp	kW	Rpm	W	A	Hp	kW	Rpm
Product #	12 V	0809-0100-0200				0809-0215-0100				0809-0100-0800				0809-0065-0500				0809-0215-1800				0809-0190-0100									
	24 V	0809-0102-0100				0809-0215-0200				0809-0100-0900				0809-0065-0700				0809-0215-1700				0809-0190-0200									
Model Abbreviations	BR: Bronze		SS: Stainless		PL: Polysulfone Plastic				BR: Bronze		SS: Stainless		PL: Polysulfone Plastic																		
	Inline Inlet		Inline Inlet		Inline Inlet				C: Center Inlet		C: Center Inlet		C: Center Inlet																		
Max Flow	5 gpm - 18.9 lpm												6 gpm - 22.7 lpm				6 gpm - 22.7 lpm														
Max Head	7.1 ft / 3.07 psi - 2.1 m												7.1 ft / 3.07 psi - 2.1 m				7.1 ft / 3.07 psi - 2.1 m				7.1 ft / 3.07 psi - 2.1 m										
Inlet	1/2" MPT				1/2" MPT				3/4" MPT				3/8" FPT & 3/4" MPT																		
Outlet	1/2" MPT				1/2" MPT				1/2" MPT				1/2" MPT																		
Max Internal Pressure	150 psi / 1034 kPa				50 psi / 344 kPa				150 psi / 1034 kPa				50 psi / 344 kPa																		
Max Liquid Temperature	250 °F / 121 °C				250 °F / 121 °C				250 °F / 121 °C				250 °F / 121 °C																		
Packed Weight	5.05 lbs / 2.29 kg				4.20 lbs / 1.90 kg				5.5 lbs / 2.5kg				4.5 lbs / 2 kg																		
ELECTRICAL	W	A	Hp	kW	Rpm	W	A	Hp	kW	Rpm	W	A	Hp	kW	Rpm	W	A	Hp	kW	Rpm	W	A	Hp	kW	Rpm	W	A	Hp	kW	Rpm	
	12 Volt DC	13	1.1	1/100	0.007	1850	13	1.1	1/100	0.007	1850	13	1.1	1/100	0.007	1850	13	1.1	1/100	0.007	1850	13	1.1	1/100	0.007	1850	13	1.1	1/100	0.007	1850
	24 Volt DC	13	0.55	1/100	0.007	1850	13	0.55	1/100	0.007	1850	13	0.55	1/100	0.007	1850	13	0.55	1/100	0.007	1850	13	0.55	1/100	0.007	1850	13	0.55	1/100	0.007	1850
Overall Pump Size	Height	Width	Length	Height	Width	Length	Height	Width	Length	Height	Width	Length	Height	Width	Length	Height	Width	Length	Height	Width	Length	Height	Width	Length	Height	Width	Length	Height	Width	Length	
	Inches	4.87	3.31	6.96	4.88	3.38	6.96	4.69	4.50	8.35	4.56	4.50	7.84	4.87	3.31	6.96	4.88	3.38	6.96	4.69	4.50	8.35	4.56	4.50	7.84	4.87	3.31	6.96			
	cm	12.3	8.4	17.7	12.3	8.5	17.7	11.9	11.4	21.2	11.5	11.4	19.9	12.3	8.4	17.7	12.3	8.5	17.7	11.9	11.4	21.2	11.5	11.4	19.9	12.3	8.4	17.7			

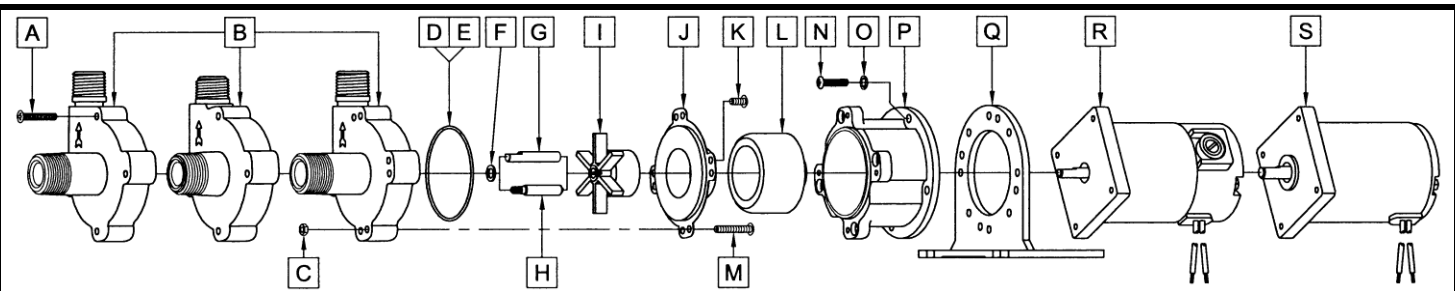
All specifications & data are based on pumping water & are intended as a guideline only. Specifications may vary with different motors.

LIMITED WARRANTY: March pumps are guaranteed only against defects in workmanship or materials for a period of one year from date of manufacture pumping water. For the complete warranty and to register online go to www.marchpump.com/warranty-registration

PARTS LIST



#	DESCRIPTION	MATERIAL	SIZE (Inches)	QTY.	809-BR	809-PL	809-SS
1	Screw (Housing)	Steel	#8-32 x 1 Lg.	4	0923-0003-1000		
	Screw (Housing)	Stainless	#8-32 x 1 Lg.	4			0809-0205-1000
2	Pump Housing	Bronze	Inline Inlet & Outlet	1	0809-0013-0000		
	Pump Housing	Polysulfone	Inline Inlet & Outlet	1		0809-0079-0100	
	Pump Housing	Stainless	Inline Inlet & Outlet	1			0809-0211-0010
3	"O" Ring	Silicone	0.070 CS x 2.441 ID	1	0809-0165-1000		0809-0165-1000
4	"O" Ring	Silicone	1/16 CS x 2-3/8 ID	1		0809-0027-1000	
5	Thrust Washer	Teflon		1		0809-0043-1000	
6	*Shaft	Stainless	"D" Flat	1		0809-0161-1000	
7	*Shaft	Stainless	Left-Hand Thread	1	0809-0214-1000		0809-0214-1000
8	Impeller	Ryton/Teflon/Glass	2 Dia.	1		0809-0005-0100	
9	Rear Housing	Stainless		1		0809-0012-1000	
10	Screw (Rear Housing)	Stainless	#8-32 x 3/8 Lg.	4		0135-0040-1000	
11	Drive Magnet		0.250 Bore	1		0125-0083-0100	
	Drive Magnet (24V Only)		0.312 Bore	1		0809-0117-0100	
12	Screw	Stainless	#8-32 x 1/2 Lg.	4		0150-0015-1000	
13	Washer	Stainless	#8	4		0858-0004-1000	
14	Motor Bracket	Plastic		1		0809-0058-1000	
15	Motor (12VDC Brush)	1850 RPM		1		0809-0100-1000	
16	Motor (24VDC Brush)	1850 RPM - Irreplaceable Brushes		1		0809-0102-1300	



#	DESCRIPTION	MATERIAL	SIZE (Inches)	QTY.	809-BR-C	809-PL-C	809-SS-C
A	Screw (Housing)	Steel	#8-32 x 1 Lg.	4	0923-0003-1000		
	Screw (Housing)	Stainless	#8-32 x 1 Lg.	4			0809-0205-1000
B	Pump Housing	Bronze	Center Inlet	1	0809-0142-0000		
	Pump Housing	Polysulfone	Center Inlet	1		0809-0179-0100	
	Pump Housing	Stainless	Center Inlet	1			0809-0150-0010
C	Hex Nut	Stainless	#8-32	4			0991-0004-1000
D	"O" Ring	Silicone	0.070 CS x 2.441 ID	1	0809-0165-1000		0809-0165-1000
E	"O" Ring	Silicone	1/16 CS x 2-3/8 ID	1		0809-0027-1000	
F	Thrust Washer	Teflon		1		0809-0043-1000	
G	*Shaft	Stainless	"D" Flat	1		0809-0161-1000	
H	*Shaft	Stainless	Left-Hand Thread	1	0809-0214-1000		0809-0214-1000
I	Impeller	Ryton/Teflon/Glass	2 Dia.	1		0809-0005-0100	
J	Rear Housing	Stainless		1		0809-0012-1000	
K	Screw (Rear Housing)	Stainless	#8-32 x 3/8 Lg.	4	0135-0040-1000		
L	Drive Magnet		0.250 Bore	1		0125-0083-0100	
	Drive Magnet (24V Only)		0.312 Bore	1		0809-0117-0100	
M	Screw	Stainless	#8-32 x 1 Lg.	4			0809-0205-1000
N	Screw	Stainless	#8-32 x 3/4 Lg.	4		0210-0036-1000	
O	Lock Washer	Stainless	#8	4		0620-0010-1000	
P	Motor Bracket	Plastic		1		0809-0058-1000	
Q	Base	Plastic		1		0125-0106-1000	
R	Motor (12VDC Brush)	1850 RPM		1		0809-0100-1000	
S	Motor (24VDC Brush)	1850 RPM - Irreplaceable Brushes		1		0809-0102-1300	

NOTE: Contact Factory for other materials and/or parts not listed.

0809-0053-1300 R6

*Check shaft type before ordering replacement parts.