



# MARCH PUMPS

1819 PICKWICK AVE., GLENVIEW, IL 60026-1306, U.S.A  
 PHONE: (847) 729-5300 - FAX: (847) 729-7062  
 WWW.MARCHPUMP.COM

## 1A-MD, 1C-MD, 1U-MD

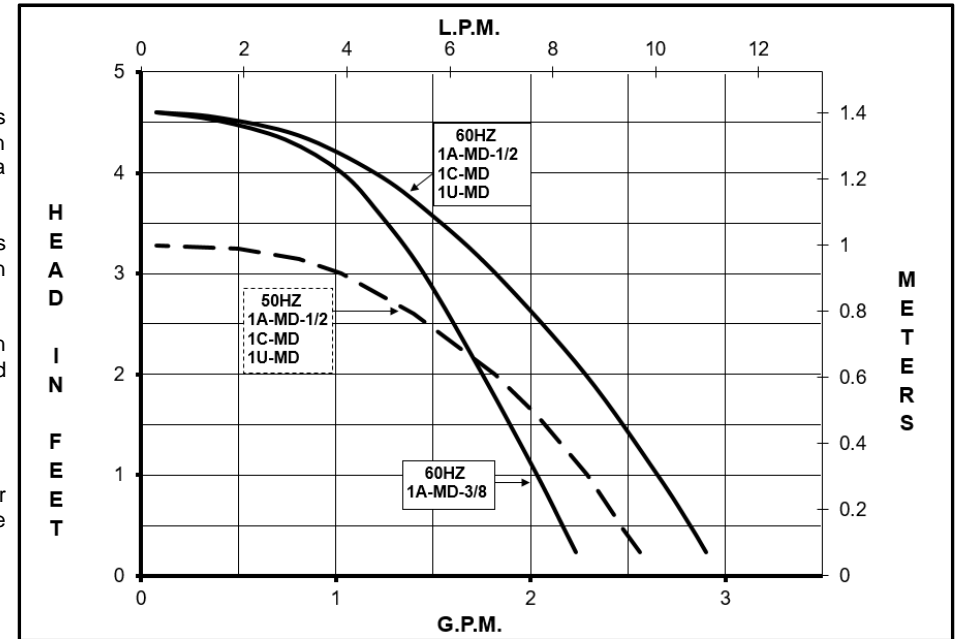
**DESCRIPTION:** Series 1 are centrifugal magnetic drive pumps, eliminating the need for a shaft seal. Pumps are serviceable with a screwdriver. The models are hermetically encapsulated, which allows the pumps to run fully submerged in many liquids or in open air for complete moisture protection. See the parts list for a breakdown of parts.

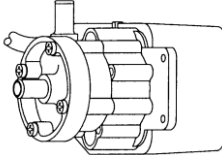
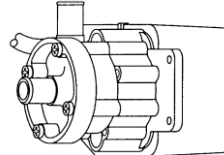
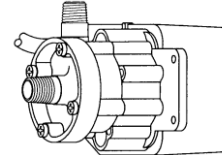
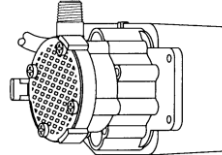
**OPERATION:** Pumps are not self-priming, lack a suction lift, and thus require a **flooded suction**. Pumps **cannot be run dry** because the impeller requires the liquid being pumped for lubrication. For application assistance, contact March Pump.

**ELECTRICAL:** The models are U.L. Recognized under the U.L. component program. U.L. Recognition On Pumps Is For Water Only. Motors are totally enclosed submersible 115 volt 50/60 Hz or 230 volt 50/60 Hz and are rated for continuous duty.  
 - 115 Volt Motors have a 6-foot (1.8 m) long cord with plug.  
 - 230 Volt Motors have a 6-foot (1.8 m) long cord without a plug.

**LIMITED WARRANTY:** March pumps are guaranteed only against defects in workmanship or materials for a period of one year from date of manufacture pumping water. For the complete warranty and to register online go to [www.marchpump.com/warranty-registration](http://www.marchpump.com/warranty-registration)

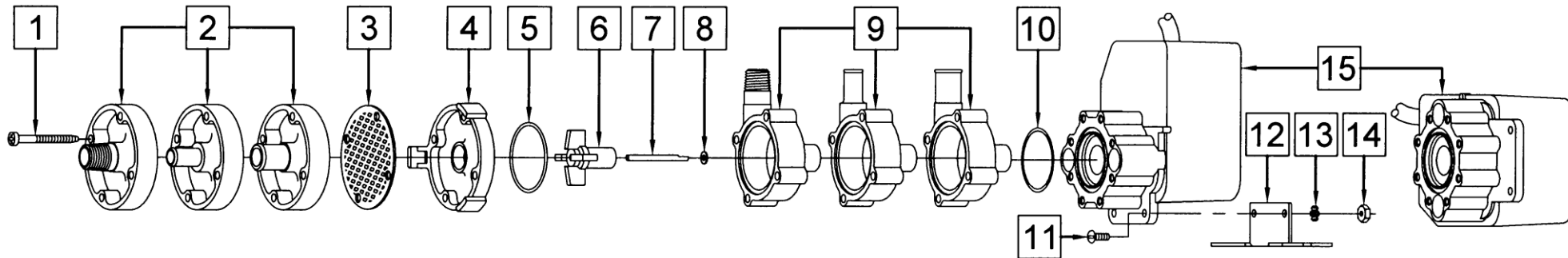
**Model Abbreviations:** A: Smooth Inlet/Outlet, C: Threaded Inlet/Outlet, U: Screen Inlet



SPECIFICATIONS	1A-MD-3/8				1A-MD-1/2				1C-MD				1U-MD																			
																																
Product #	115 V	0115-0007-0100				0115-0007-0200				0115-0007-0300				0115-0007-0400																		
	230 V	0115-0007-0600				0115-0007-0700				0115-0007-0800				0115-0007-0900																		
Inlet - Outlet	3/8" OD - 3/8" OD				1/2" OD - 1/2" OD				1/4" MPT - 1/4" MPT				Screen - 1/4" MPT																			
Max Internal Pressure	50 psi (344 kPa)				50 psi (344 kPa)				50 psi (344 kPa)				50 psi (344 kPa)																			
Max Liquid Temperature	190 °F (87 °C) open air 160 °F / 71 °C submersible				190 °F (87 °C) open air 160 °F / 71 °C submersible				190 °F (87 °C) open air 160 °F / 71 °C submersible				190 °F (87 °C) open air 160 °F / 71 °C submersible																			
MODEL	60 Hz												50 Hz												Height		Width		Length		Packed Weight	
	Max Flow		Max Head		ELECTRICAL								Max Flow		Max Head		ELECTRICAL								Inches	cm	Inches	cm	Inches	cm	lbs	kg
	gpm	lpm	ft	psi	m	Ph	V	A	Hp	kW	Rpm	gpm	lpm	ft	psi	m	Ph	V	A	Hp	kW	Rpm										
1A-MD-3/8	2.3	8.7	4.6	2.0	1.4	1	115	0.45	1/200	0.003	3200	2.0	7.5	3.3	1.4	1.0	1	115	0.45	1/200	0.003	2650	3.17	8.1	3.75	9.5	4.44	11.3	2.65	1.20		
							230	0.23										230	0.23											2.60	1.17	
1A-MD-1/2	3.0	11.3	4.6	2.0	1.4	1	115	0.45	1/200	0.003	3200	2.3	9.0	3.3	1.4	1.0	1	115	0.45	1/200	0.003	2650	3.17	8.1	3.75	9.5	4.44	11.3	2.65	1.20		
							230	0.23										230	0.23											2.60	1.17	
1C-MD	3.0	11.3	4.6	2.0	1.4	1	115	0.45	1/200	0.003	3200	2.3	9.0	3.3	1.4	1.0	1	115	0.45	1/200	0.003	2650	3.17	8.1	3.75	9.5	4.44	11.3	2.60	1.17		
							230	0.23										230	0.23											2.55	1.15	
1U-MD	3.0	11.3	4.6	2.0	1.4	1	115	0.45	1/200	0.003	3200	2.3	9.0	3.3	1.4	1.0	1	115	0.45	1/200	0.003	2650	3.17	8.1	3.75	9.5	3.83	9.7	2.65	1.20		
							230	0.23										230	0.23											2.65	1.20	

All specifications & data are based on pumping water & are intended as a guideline only. Specifications may vary with different motors.

## PARTS LIST



### 1A-MD-3/8

#	DESCRIPTION	MATERIAL	SIZE (Inches)	QTY.	PART #
1	Self-Tapping Screw	Stainless	#7-19 x 1-7/16 Lg.	4	0115-0062-1000
2	Cover	Polypropylene	3/8 OD Inlet	1	0115-0075-1000
5	"O" Ring (Cover)	Buna N	1/16 CS x 1-7/16 OD	1	0115-0018-1000
6	Impeller (Encapsulated)	Polypropylene		1	0115-0119-1000
7	Shaft	316 Stainless		1	0115-0032-1000
8	Thrust Washer	Carbon/Teflon		1	0115-0033-1000
9	Rear Housing	Polypropylene	3/8 OD Outlet	1	0115-0074-1000
10	"O" Ring (Bracket)	Buna N	1/16 CS x 1-5/16 OD	1	0115-0017-1000
15	Epoxy Motor, Bracket, Cord Assy. (115 V 50/60 Hz) or (230 V 50/60 Hz)			n/a	Not Available

### 1A-MD-1/2

#	DESCRIPTION	MATERIAL	SIZE (Inches)	QTY.	PART #
1	Self-Tapping Screw	Stainless	#7-19 x 1-7/16 Lg.	4	0115-0062-1000
2	Cover	Polypropylene	1/2 OD Inlet	1	0115-0060-1000
5	"O" Ring (Cover)	Buna N	1/16 CS x 1-7/16 OD	1	0115-0018-1000
6	Impeller (Encapsulated)	Polypropylene		1	0115-0119-1000
7	Shaft	316 Stainless		1	0115-0032-1000
8	Thrust Washer	Carbon/Teflon		1	0115-0033-1000
9	Rear Housing	Polypropylene	1/2 OD Outlet	1	0115-0059-1000
10	"O" Ring (Bracket)	Buna N	1/16 CS x 1-5/16 OD	1	0115-0017-1000
15	Epoxy Motor, Bracket, Cord Assy. (115 V 50/60 Hz) or (230 V 50/60 Hz)			n/a	Not Available

### 1C-MD

#	DESCRIPTION	MATERIAL	SIZE (Inches)	QTY.	PART #
1	Self-Tapping Screw	Stainless	#7-19 x 1-7/16 Lg.	4	0115-0062-1000
2	Cover	Polypropylene	1/4 MPT Inlet	1	0115-0058-1000
5	"O" Ring (Cover)	Buna N	1/16 CS x 1-7/16 OD	1	0115-0018-1000
6	Impeller (Encapsulated)	Polypropylene		1	0115-0119-1000
7	Shaft	316 Stainless		1	0115-0032-1000
8	Thrust Washer	Carbon/Teflon		1	0115-0033-1000
9	Rear Housing	Polypropylene	1/4 MPT Outlet	1	0115-0057-1000
10	"O" Ring (Bracket)	Buna N	1/16 CS x 1-5/16 OD	1	0115-0017-1000
15	Epoxy Motor, Bracket, Cord Assy. (115 V 50/60 Hz) or (230 V 50/60 Hz)			n/a	Not Available

### 1U-MD

#	DESCRIPTION	MATERIAL	SIZE (Inches)	QTY.	PART #
1	Self-Tapping Screw	Stainless	#7-19 x 1-7/16 Lg.	4	0115-0062-1000
3	Inlet Screen	Delrin		1	0115-0012-1000
4	Cover	Cyclocac		1	0115-0016-1000
5	"O" Ring (Cover)	Buna N	1/16 CS x 1-7/16 OD	1	0115-0018-1000
6	Impeller (Encapsulated)	Polypropylene		1	0115-0119-1000
7	Shaft	316 Stainless		1	0115-0032-1000
8	Thrust Washer	Carbon/Teflon		1	0115-0033-1000
9	Rear Housing	Polypropylene	1/4 MPT Outlet	1	0115-0057-1000
10	"O" Ring (Bracket)	Buna N	1/16 CS x 1-5/16 OD	1	0115-0017-1000
15	Epoxy Motor, Bracket, Cord Assy. (115 V 50/60 Hz) or (230 V 50/60 Hz)			n/a	Not Available

### OPTIONS

#	DESCRIPTION	MATERIAL	SIZE (Inches)	QTY.	PART #
2	Cover	Kynar	1/2 OD Inlet	1	0115-0096-1000
5	"O" Ring (Cover)	Viton	1/16 CS x 1-7/16 OD	1	0115-0061-1000
5	"O" Ring (Cover)	Teflon	1/16 CS x 1-7/16 OD	1	0115-0069-1000
6	Impeller	Kynar/Ceramic Magnet		1	0115-0097-0100
9	Rear Housing	Kynar	1/2 OD Outlet	1	0115-0095-1000
11	Screw	Stainless	#6-32 x 3/8 Lg.	2	0455-0038-1000
12	Base	Stainless		1	0115-0081-1000
13	Lock Washer	Stainless	#6	2	0455-0037-1000
14	Nut	Steel	#6-32	2	0455-0043-1000

### Materials in Contact with Solution:

Open Air:  
Polypropylene, Buna N, 316 Stainless Steel, & Carbon/Teflon Washer.

When Submerged:  
The following additional materials are in contact: Epoxy, Noryl, Cyclocac, Delrin, and SJT cord.

NOTE: Contact Factory for other materials and/or parts not listed.

0115-0035-1000 R33