



MARCH PUMPS

1819 PICKWICK AVE., GLENVIEW, IL 60026-1306, U.S.A
 PHONE: (847) 729-5300 - FAX: (847) 729-7062
 WWW.MARCHPUMP.COM

AC-4C-MD, BC-4C-MD, AC-4A-MD, BC-4A-MD, BC-4K-MD

DESCRIPTION: Series 4 are centrifugal magnetic drive pumps, eliminating the need for a shaft seal. Pumps can be serviced with a screwdriver. See the parts list for a breakdown of parts.

OPERATION:

Pumps are not self-priming, lack a suction lift, and thus require a **flooded suction**. Pumps **cannot be run dry** because the impeller requires the liquid being pumped for lubrication. For liquids with a specific gravity greater than water, have a higher viscosity, or for elevated temperatures, a trimmed impeller may be necessary. For application assistance, contact March Pump.

ELECTRICAL:

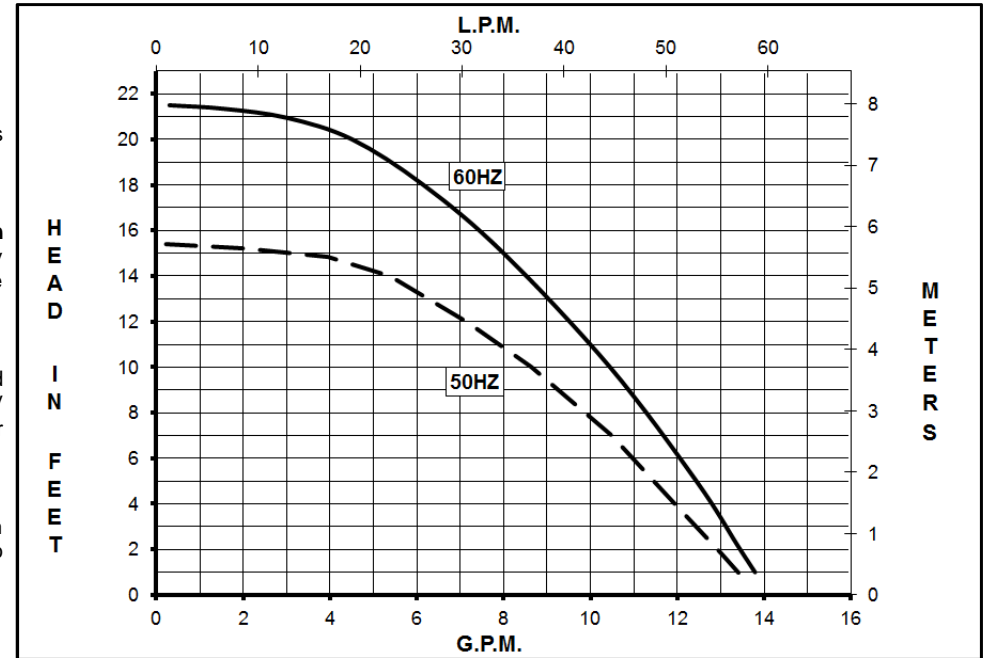
AC models have an Air Cooled Motor. BC models have a Blast Cooled Motor and they have an encapsulated impeller magnet. Motors are available in different electrical configurations such as 115 V 50/60 Hz, or 230 V 50/60 Hz, 1 phase. Motors have a 3 ft. (0.9 m) cord. All models have U.L. listed motors, which are rated for continuous duty.

LIMITED WARRANTY:

March pumps are guaranteed only against defects in workmanship or materials for a period of one year from date of manufacture pumping water. For the complete warranty and to register online go to www.marchpump.com/warranty-registration

MODEL ABBREVIATIONS:

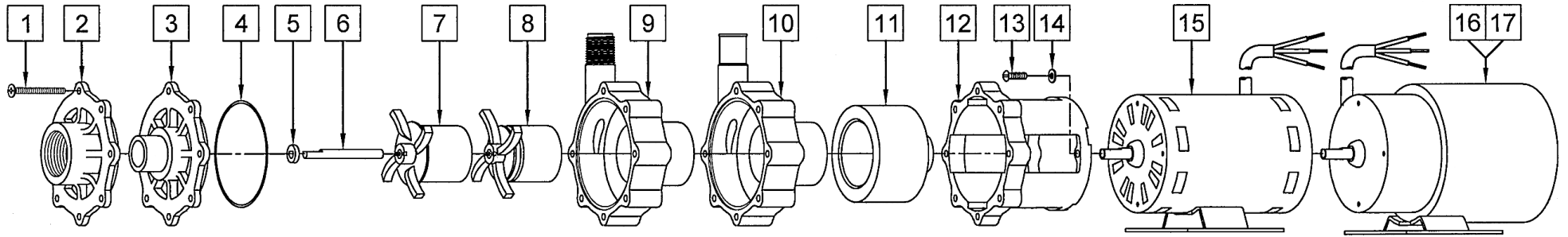
C/K: Threaded Inlet/Outlet, A: Smooth Inlet/Outlet, K: Kynar, C/A: Polypropylene



SPECIFICATIONS	AC-4C-MD		AC-4A-MD		BC-4C-MD		BC-4A-MD		BC-4K-MD																					
Product #	115 V 230 V	0145-0010-0100	0145-0052-0100	0145-0010-0400 0145-0010-0500	0145-0048-0200 0145-0048-0100	0145-0010-0800 0145-0010-0900																								
Inlet - Outlet	1" FPT - 1/2" MPT		1" OD - 3/4" OD		1" FPT - 1/2" MPT		1" OD - 3/4" OD		1" FPT - 1/2" MPT																					
Max Internal Pressure	50 psi (344 kPa)		50 psi (344 kPa)		50 psi (344 kPa)		50 psi (344 kPa)		75 psi (517 kPa)																					
Max Liquid Temperature	190 °F (87 °C)		190 °F (87 °C)		190 °F (87 °C)		190 °F (87 °C)		200 °F (93 °C)																					
MODEL	60 Hz										50 Hz										Height		Width		Length		Packed Weight			
	Max Flow		Max Head		ELECTRICAL						Max Flow		Max Head		ELECTRICAL						Inches	cm	Inches	cm	Inches	cm	lbs	kg		
AC-4C-MD	14	53	21.5	9.3	6.55	1	115	1.75	1/12	0.062	3450	13.2	50	15.4	6.7	4.7	1	115	1.75	1/12	0.062	2850	5.57	14.1	5.11	12.9	9.77	24.8	8.05	3.65
AC-4A-MD	14	53	21.5	9.3	6.55	1	115	1.75	1/12	0.062	3450	13.2	50	15.4	6.7	4.7	1	115	1.75	1/12	0.062	2850	5.57	14.1	5.11	12.9	10.34	26.2	8.05	3.65
BC-4C-MD	14	53	21.5	9.3	6.55	1	115	1.9	1/10	0.075	3450	13.2	50	15.4	6.7	4.7	1	115	1.9	1/10	0.075	2850	5.65	14.1	5.36	13.6	10.18	25.8	8.15	3.69
							230	0.75	1/12	0.062								230	0.75	1/12	0.062								8.15	3.69
BC-4A-MD	14	53	21.5	9.3	6.55	1	115	1.9	1/10	0.075	3450	13.2	50	15.4	6.7	4.7	1	115	1.9	1/10	0.075	2850	5.65	14.1	5.36	13.6	10.74	27.2	8.15	3.69
							230	0.75	1/12	0.062								230	0.75	1/12	0.062								8.15	3.69
BC-4K-MD	14	53	21.5	9.3	6.55	1	115	1.9	1/10	0.075	3450	13.2	50	15.4	6.7	4.7	1	115	1.9	1/10	0.075	2850	5.65	14.1	5.36	13.6	10.18	25.8	8.40	3.81
							230	0.75	1/12	0.062								230	0.75	1/12	0.062								8.40	3.81

All specifications & data are based on pumping water & are intended as a guideline only. Specifications may vary with different motors.

PARTS LIST



NOTE: When attaching the Drive Magnet to the motor shaft, position the face of the Drive Magnet 1/16 inch below the face of the Motor Bracket.

#	DESCRIPTION	MATERIAL	SIZE (Inches)	QTY.	PART #				
					AC-4C-MD	AC-4A-MD	BC-4C-MD	BC-4A-MD	BC-4K-MD
1	Screw	Stainless Steel	#8-32 x 1-3/4 Lg.	7			0150-0021-1000		
2A	Cover	Polypropylene	1 FPT Inlet	1	0150-0032-1000		0150-0032-1000		
2B		Kynar/Glass		1					0150-0124-1000
3	Cover	Polypropylene	1 OD Inlet	1		0150-0150-1000		0150-0150-1000	
4A	"O" Ring	Buna-N	0.078 CS x 2.834 ID	1	0750-0987-1000				
4B	"O" Ring	Viton	0.078 CS x 2.834 ID	1			0750-0986-1000		
4C	"O" Ring (Option)	Viton/Teflon	0.078 CS x 2.893 ID	1			0150-0212-1000		
5	Thrust Washer	Ceramic		1			0130-0028-1000		
6	Shaft	Ceramic		1			0130-0024-1000		
7A	Encapsulated Impeller	Polypropylene		1			0145-0033-0200		
7B		Kynar/Carbon	1					0145-0039-0200	
8	Impeller	Polypropylene/Ceramic Magnet		1	0145-0011-0100				
9A	Rear Housing w/Thrust Washer	Polypropylene/Ceramic	1/2 MPT Outlet	1	0150-0031-0100		0150-0031-0100		
9B		Kynar/Glass/Ceramic		1				0150-0123-0100	
10	Rear Housing w/Thrust Washer	Polypropylene/Ceramic	3/4 OD Outlet	1		0150-0159-0100		0150-0159-0100	
11	Drive Magnet			1			0145-0027-0100		
12	Motor Bracket	Plastic		1			0145-0010-1000		
13	Screw	Stainless Steel	#8-32 x 5/8 Lg.	4			0618-0027-1000		
14	Washer Flat	Stainless Steel	#8	4			0858-0004-1000		
15	AC Motor, 115 V, 50/60 Hz			1	0145-0012-1000				
16	BC Motor, 115 V, 50/60 Hz			1			0145-0035-1000		
17	BC Motor, 230 V, 50/60 Hz			1			0145-0036-1000		
#	DESCRIPTION	ITEMS		QTY.	AC-4C-MD	AC-4A-MD	BC-4C-MD	BC-4A-MD	BC-4K-MD
W1	Wet End Kit (AC-4C-MD)	(1, 2A, 4A, 5, 6, 8, 9A)		1	0145-0045-0200				
W2	Wet End Kit (BC-4C-MD)	(1, 2A, 4B, 5, 6, 7A, 9A)		1			0145-0046-0200		

Materials in Contact with Solution:

AC-4C-MD & AC-4A-MD: Polypropylene, Ceramic, Buna N, Ceramic Magnet

BC-4C-MD & BC-4A-MD: Polypropylene, Ceramic, Viton

BC-4K-MD: Kynar/Carbon Filled & Kynar/Glass Filled, Viton, Ceramic

NOTE: Contact Factory for other materials and/or parts not listed.

0145-0023-1000 R28