



# MARCH PUMPS

1819 PICKWICK AVE., GLENVIEW, IL 60026-1306, U.S.A  
 PHONE: (847) 729-5300 - FAX: (847) 729-7062  
 WWW.MARCHPUMP.COM

## DESCRIPTION:

Series 7 are centrifugal magnetic drive pumps, eliminating the need for a shaft seal. Pumps can be serviced with an adjustable wrench. See the parts list for a breakdown of parts.

**Model Abbreviations:** K: Kynar, P: Polypropylene

## OPERATION:

Pumps are not self-priming, lack a suction lift, and thus require a **flooded suction**. Pumps **cannot be run dry** because the impeller requires the liquid being pumped for lubrication. The direction of motor rotation should be clockwise when facing the inlet of the pump. For liquids with a specific gravity greater than water, have a higher viscosity, or for elevated temperatures, a trimmed impeller may be necessary. For application assistance, contact March Pump.

## MOTORS:

All models have an air motor. All have a 1/4" NPT air connection. Motors are 0.95 Hp (0.708 kW).

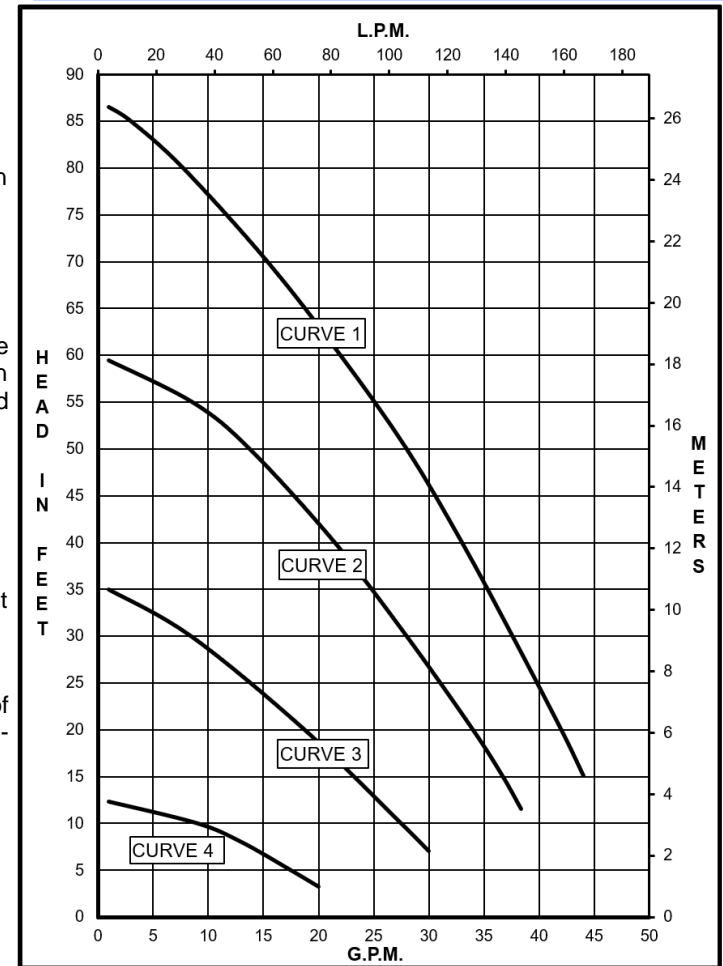
## AIR MOTOR INSTALLATION:

Install a moisture trap, filter, and an automatic airline lubricator in the air line just ahead of the air motor. Use detergent SAE #10 automotive engine oil.

## LIMITED WARRANTY:

March pumps are guaranteed only against defects in workmanship or materials for a period of one year from date of manufacture pumping water. For the complete warranty and to register online go to [www.marchpump.com/warranty-registration](http://www.marchpump.com/warranty-registration)

## TE-7K-MD-AM, TE-7P-MD-AM



Model	PSI	CFM	Curve
TE-7-MD-AM	95	30	1
	75	22	2
	45	12	3
	25	6	4

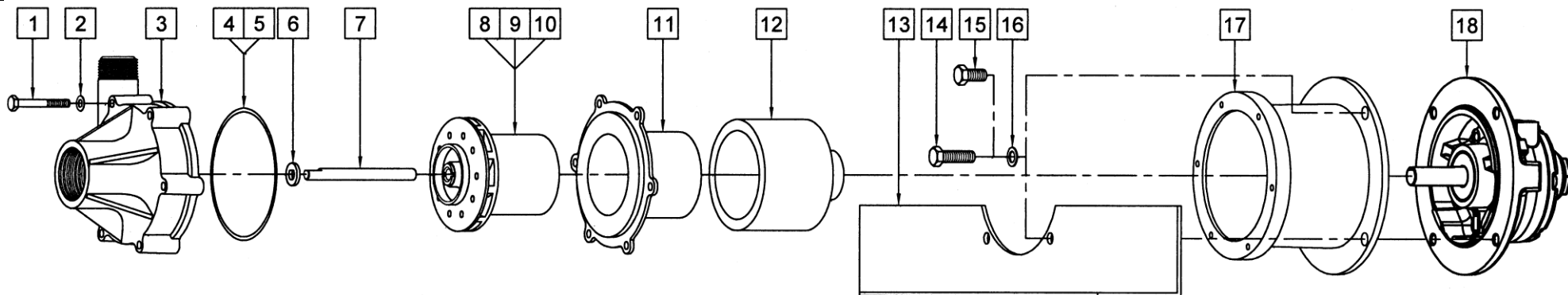
MODEL	Product #	TE-7K-MD-AM										TE-7P-MD-AM											
		Max Flow		Max Head			Inlet	Outlet	Max Internal Pressure		Max Liquid Temperature		Max Air Pressure		Height		Width		Length		Packed Weight		
		gpm	lpm	ft	psi	m			psi	kPa	°F	°C	psi	bar	CFM	Inches	cm	Inches	cm	Inches	cm	lbs	kg
TE-7K-MD-AM	0155-0261-0100	44	166	87	37.7	26.5	1-1/2" FPT	1" MPT	75	517	200	93	100	6.8	30	8.12	20.6	12	30.4	11.31	28.7	21	9.52
TE-7P-MD-AM	0155-0258-0100	44	166	87	37.7	26.5	1-1/2" FPT	1" MPT	50	344	190	87	100	6.8	30	8.12	20.6	12	30.4	11.31	28.7	21	9.52

All specifications/values are based on pumping water and are intended as a guideline only. Values may vary with different motors.

**NOTE:**

When replacing Impeller Bushing in the field: The plastic bushings must be bored to size after they have been pressed into the impeller. Bore to 0.378/0.381 I.D. The carbon and ceramic bushings are to finished size and do not require boring. When attaching drive magnet to the motor shaft, position the face of the drive magnet 1/8 inch below the face of the motor bracket.

**PARTS LISTS**



#	TE-7K-MD-AM				#	TE-7P-MD-AM			
1	0155-0014-1000	6	1/4"-20 x 2" Lg. Screw (Stainless)	1	0155-0014-1000	6	1/4"-20 x 2" Lg. Screw (Stainless)		
2	0155-0021-1000	6	1/4" ID x 1/2" OD Washer (Stainless)	2	0155-0021-1000	6	1/4" ID x 1/2" OD Washer (Stainless)		
3	0155-0125-1000	1	Front Housing (Kynar)	3	0155-0011-1000	1	Front Housing (Polypropylene)		
4	0155-0010-1000	1	1/8" CS x 4-3/8" OD "O" Ring (Viton)	4	0155-0010-1000	1	1/8" CS x 4-3/8" OD "O" Ring (Viton)		
5	0155-0071-1000	1	1/8" CS x 4-3/8" OD "O" Ring (Viton/Teflon) – Option	5	0155-0071-1000	1	1/8" CS x 4-3/8" OD "O" Ring (Viton/Teflon) – Option		
6	0155-0009-1000	1	Thrust Washer (Ceramic)	6	0155-0009-1000	1	Thrust Washer (Ceramic)		
7	0155-0039-1000	1	4.070" Lg. Shaft (Ceramic)	7	0155-0039-1000	1	4.070" Lg. Shaft (Ceramic)		
8	0155-0160-0500	1	Impeller w/Teflon/Ryton/Carbon Bushing (Kynar) – Option	8	0155-0159-0500	1	Impeller w/Teflon/Ryton/Carbon Bushing (Polypropylene)		
9	0155-0160-0200	1	Impeller w/Carbon Bushing (Kynar)	9	0155-0159-0200	1	Impeller w/Carbon Bushing (Polypropylene) – Option		
10	0155-0160-0400	1	Impeller w/Mica Teflon Bushing (Kynar) – Option	10	0155-0159-0400	1	Impeller w/Mica Teflon Bushing (Polypropylene) – Option		
11	0155-0124-0100	1	Rear Housing w/Ceramic Thrust Washer (Kynar)	11	0155-0091-0100	1	Rear Housing w/Ceramic Thrust Washer (Polypropylene)		
12	0155-0130-0200	1	Drive Magnet	12	0155-0130-0200	1	Drive Magnet		
13	0155-0260-0000	1	Pump Support Bracket (Aluminum)	13	0155-0260-0000	1	Pump Support Bracket (Aluminum)		
14	0161-0042-1000	2	3/8"-16 x 1-1/4" Lg. Screw (Stainless)	14	0161-0042-1000	2	3/8"-16 x 1-1/4" Lg. Screw (Stainless)		
15	0155-0017-1000	2	3/8"-16 x 3/4" Lg. Screw (Stainless)	15	0155-0017-1000	2	3/8"-16 x 3/4" Lg. Screw (Stainless)		
16	0155-0019-1000	4	3/8" ID x 5/8" OD Washer (Stainless)	16	0155-0019-1000	4	3/8" ID x 5/8" OD Washer (Stainless)		
17	1095-0015-0010	1	Motor Bracket (Aluminum)	17	1095-0015-0010	1	Motor Bracket (Aluminum)		
17A	0155-0092-0100	1	Motor Bracket (Plastic) – Option	17A	0155-0092-0100	1	Motor Bracket (Plastic) – Option		
18	0155-0257-1000	1	Air Motor	18	0155-0257-1000	1	Air Motor		
W	0155-0166-0100	1	Wet End Kit: Items (1, 2, 3, 4, 6, 7, 9, 11)	W	0155-0255-0100	1	Wet End Kit: Items (1, 2, 3, 4, 6, 7, 8, 11)		
<b>Materials in Contact with Solution</b>				<b>Materials in Contact with Solution</b>					
Kynar/Glass Filled, Viton, Ceramic, Carbon				Polypropylene, Viton, Ceramic, Ryton/Teflon/Carbon					

NOTE: Contact Factory for other materials and/or parts not listed.

0155-0046-1300 R2